

e-News and Notes

For Bodenham, Britford, Charlton All Saints, Nunton and Odstock

June 2025

What's here this month

Welcome to our Blazing June Edition of News and Notes.

This month we have another interesting collection of articles which we hope might pique your interest. For something completely different, Martin Simcock, who regularly writes so beautifully about food, entertains us this month with the mysteries encountered within in other people's kitchens.

We have a Spotlight article with our very own Hostess with the Mostess, Louise at the Radnor. Read her story and her love for all things Nunton. Not forgetting the Yew Tree and a fascinating article by my co-editor about You and Yews. And our esteemed erstwhile co-editor Anna has written about her work bringing the creative arts into the spinal unit for the huge benefit of the patients.

On a serious and urgent note please see the article from our Britford contributor who writes to say: **please make your voice heard** if you are worried about the consequences of the planning application for 220 houses on the field at Britford that will cause more traffic congestion in Harnham, and increase the risk of yet more flooding of homes and lanes in Britford village; all possibly very serious, distressing and irreversible repercussions.

We have another 'Use it or Lose it' too, plus loads of important announcements including notice of the Parish Council meeting about Jubilee Gardens, where the riverbank has been eroding badly. And don't forget Ebbfest is fast approaching on 5 July so please check that's in your diary. Or better still volunteer to help - get in touch through News and Notes if you can.

The Editors

Editors: Liz & Nick Stanger

Email: editor@newsandnotes.co.uk

Next Deadline: 14 June for July & August 2025 edition

PLANS TO BUILD ON THE FIELD opposite the Britford Park & Ride

ACT NOW! Deadline Tues 17 June

Objections to the Planning Application by Persimmon to build on the field between Britford and Salisbury must now be in. (Planning Application: PL/2025/02992 for 'Land North of Downton Road). <https://search.app/JZiGpBvL5boeacwB9>

This is different from the Local Plan: these guys may never see all the comments we've already made for that; the developers have made an interesting move in applying for planning before the site is approved in the local plan, banking on "objection fatigue" on our part. But this is a new opportunity – and indeed, a necessity - to object.

Objections to a planning application are very easy to make and everyone has a voice that matters, but only object about things they can take into account. The people who make these decisions will never have visited the site, they rely on documents. What do you know that they cannot see from a plan? What effect do you think building on a large arable field which slopes down and meets the flood plain will have on existing housing built on the edges of that flood plain? Do you have personal experience or photos of this which you can explain?

This building will produce extra water run-off straight into the flood plain. Do the planners know that *at this very time* the people of Britford are applying for planning permission to build an earthen bund to try to keep the existing waters out? **HOMES IN BRITFORD ARE ALREADY FLOODING, even without the extra water from the new development!**

According to the Council's own traffic modelling, *"the impact from all (so not just this site) the new housing proposed will result at peak times in: Journey times on the Downton Road and Coombe Road to Exeter Street increasing by up to 46%; delays on the Downton Road and Coombe Road at the Harnham Gyratory increasing by between 69% and 88%, with queue lengths increasing by over 145%. Queues on the New Harnham Road to the Harnham Gyratory will increase by 275%."*

Britford is an historic and beautiful conservation area overlying an Anglo-Saxon settlement and protected by an Area of Archaeological Potential. Should it be joined on to the suburbs and so lose its identity?

Is there any value to local people and the people of Salisbury in having a **green footpath** through fields into a village? Do people you know use it and like it; does it bring health benefits? Does it seem to be more valuable than simply a route from A to B which is likely to be hard surfaced? The government says it places values on 'green corridors' for us...

WHAT YOU NEED TO DO – right now (Planning Application: PL/2025/02992 for 'Site 6, Land North of Downton Road). <https://search.app/JZiGpBvL5boeacwB9>

Click "Comments" and scroll down. You are invited to leave comments. It takes minutes (we've tried it) and it will matter for the rest of our lives. Please make your voice heard and do so: it's pointless complaining after the event! You could compose them elsewhere and then copy and paste them into the box and press 'submit'.

THE DEADLINE IS TUESDAY 17 JUNE.

Announcements

Don't forget EbbleFest on Saturday 5 July!

PARISH WALK 22 June:-- Book your place beforehand

Longford Estate and Odstock Parish Council would like to offer residents another opportunity to join a walk through the Estate guided by some of the Estate team on **Sunday 22nd June**.

The walk will take about 3 to 4 hours and cover about 7 miles. Because the walk will take in private parts of the Estate away from public rights of way it will not be suitable for wheelchair or push chair access. Dogs are welcome but will need to be on leads. There will be an opportunity to stop for a picnic lunch as part of the walk.

If you wish to come along, please register your interest beforehand by emailing parishwalks@odstock-pc.org.uk as places are limited.

CHARLTON ANNUAL BBQ save the date, it's 19 July! And for the community Nature Counts in the churchyard there, it's 14 June at 2pm - see News from the Pews for more info.

Debbie and Samir Vyas are delighted to announce the birth of their third grandchild Delilah Joy Vyas on 29 April 2025, a beautiful daughter for Nathan & Lizzie and a sister for Bodhi.

BLISTER PACK COLLECTION Monday 16 June

- Britford, Notice board by Church: 0915 - 09.45
- Bodenham, Old Post Office: 10.00 - 10.30
- Charlton All Saints, Post Box: 10.45 - 11.15
- Odstock, Church Car park: 11.30 - 12.30

Donations kindly requested: £1 per 50 strips.

Thank you for helping the environment!

ODSTOCK PARISH COUNCIL ERODING RIVER BANK WORKS- have your say!

Significant erosion of the river banks at Jubilee gardens has been seen over the last few years and The Parish Council will be holding an Extra Ordinary Meeting on **Wednesday 18th June 2025 at 7.30 pm** to discuss proposals to remediate this at the Pavilion, Nunton Recreation Field. All are welcome.

Focus on Food

Letter from West Wales

Bee and I spent a fat week visiting old friends in Bristol, Bath, Salisbury and the 'five villages' in the middle of May, including a three day house-sit for some friends having a mini break in Barcelona. Joyful to catch up with everyone and fascinating navigating other people's kitchens, an experience I haven't consciously been aware of in my life to date. The names have been changed or omitted to protect the innocent.

Other people's kitchens are an alien landscape, they often look a bit like yours until you try to find anything or use anything. The pans are not quite the right size, and the balance is somehow wrong, the weight throws you off. Back in the days of Bread and Flowers, when many of the chefs had the same 'pastry knife', I could always tell if I'd picked up the wrong one, just from the feel of it in my hand. And in other people's kitchens, there's always a knack to lighting the gas hob, one which evades you for the duration of your house-sit stay. The recycling system just doesn't seem to exist, even though you know it does because you've had so many discussions on the subject over the years.

Teaspoons, a common implement, found often, but not always in the cutlery draw, were a particular challenge on my stay in Wilton. Having spent two days scouring every draw in the kitchen, the dishwasher, the outback, the apple store, the office filing cabinet, I eventually found them growing out of a glass tumbler on the windowsill, where they had been hiding in plain sight for two days. Why? You're left thinking, wow, if this is what's going on in their kitchen, what's going on inside their head.

Overnighting with other friends, I woke up and said to Bee, my wife, 'I'll pop down and make a cup of tea', hopping out of bed early, before anyone else had risen, particularly our hosts, and descended to the kitchen. What could be simpler, kettle, hot water, tea bag, cup, milk. It was an ample kitchen with full on breakfast bar, three dishwashers, fully fitted ovens and hobs, hidden fridges and appliances. Gadgets hanging from every hook. Fabulous art works and a 'coffee station' with machines boasting enough technology to partner NASA on a moon landing. Having examined them closely I decided on two teas, even though I'm a coffee addict, there was no way I could even work out how to switch them on.

Fifteen minutes later, I still hadn't located either a kettle or a tea bag. Surely, they can't have a 'tea station' I mused, until ten minutes after that, I found the exact thing through a side door into the butler's pantry. There were fifteen teas to choose from, maybe more, with a small box labelled 'decaf builders', REALLY?, really. What builder worth their salt would ever opt for a decaf, maybe I'm behind the times.

Then there's the electric hob, which however long you stare at it, doesn't offer up any clue as to how it actually works. I just want to heat up a couple of tablespoons of milk but I'm bewildered when confronted with something resembling a 24 track mixing desk at Abbey Road Studios.

You love your friends, and you think you understand them until you're left alone in their kitchen one bright May morning, and you begin to realise that you never fully understood them and perhaps you never will.

Martin Simcock

Martin is now writing on the [Scribhound Food Platform](#)- please visit, see & 'like!'

Creative Health: The Arts in Salisbury Hospital



Hello! It's Anna here. Previous Co-Editor of News & Notes and current Co-Director of the theatre company ***Stories in the Dust***. We tour our show (of the same name) to theatres across the country. We believe that the arts should be accessed by all, equally, and that's why we also take our show to non-theatre spaces. We have portable lights, a sound system and a reduced, modular version of the set that will fit just about anywhere. The content of the show always remains the same; live music, singing and plenty of adventure – we'd never scrimp on that!

Recently we had the pleasure of taking the show to the Spinal Unit at Salisbury District Hospital where we performed for patients and their families. This was part of an important strand of our work called ***Creative Health***. We don't usually take the whole show into the hospital although we do visit regularly, instead with a bedside adaptation. This consists of ten to fifteen minutes of flexible songs, stories & scenes that can be adapted (in the moment!) to suit any ward, side room or patient whom we encounter. The aim of the work is to gently disrupt what can be a very routine day. We want to lift spirits, give people something to talk about and simply entertain, which the arts do so well.

It's fair to say that this work can be challenging. We're constantly assessing the environment around us and we see a lot of illness. Patient engagement varies, often people join in, laugh and smile, get up and dance even but sometimes it's as simple as a wave of a hand to the rhythm of the music, eyes still closed. We meet a diverse range of people from all walks of life and it's truly a privilege to perform for them, and of course for the wonderful staff too.

Thanks to funding from Arts Council England we're currently developing this strand of our work and will be visiting more hospitals across the UK. We're doing this in partnership with ArtCare, the creative health service at Salisbury Hospital who are funded by Stars Appeal and are responsible for programming the diverse range of arts and wellbeing that is delivered throughout the hospital.

If you'd like to find out more about this work then please visit:

storiesinthedust.co.uk/creativehealth and artcaresalisbury.uk

Use it or lose it: a fair hand

When did you last write a letter? I'm not sure I can remember when I did: a note of sympathy perhaps – the only kind of missive which still needs to be written by hand and isn't just a card of some sort. Everything else gets typed on a keyboard and sent electronically in some way or another.

I watch my grandchildren laboriously learning to write and am amazed at how quickly they learn a skill it took humankind hundreds of thousands of years to develop. As they painstakingly form each letter, I reflect that they will need this ability less and less in the course of their lives.

But just consider: alone in the universe (so far as we know) humankind has the ability to externalise the thoughts in our minds and leave them in a format others will comprehend. Even if we scratch the words onto a tree, or compose the letters from stones on a beach they are out in the world. It is an extraordinary skill. Just as astonishing: the thoughts themselves are actually electrical impulses constantly interacting through billions of neurons and synapses, yet we have devised ways to materialise them in 26 squiggles.

This Latin alphabet, now used by seventy per cent of the global population, represents the immensely complex thoughts which we have repeatedly transformed – first into inner speech, then into sounds, the sounds into signs, finally marking those signs onto something in the material world which we leave for others to find. They are the metamorphosis of the thoughts in your head and could be left somewhere, anywhere in the world or beyond. They could lie dormant through the ages, meaningless until someone finds them, possibly even millennia later, long after you have been forgotten.

In 23 BC, the Roman poet Horace, aware of his own genius, realised that his writing could offer him immortality. He knew he could rely on generation after generation to remember his words:

*"I have built a monument more lasting than bronze higher than the royal Pyramids,
that no rain can eat away, nor north wind destroy..."*

It occurs to me, as I listen to little Alice slowly sound out the letters of her school book, that it was because the thoughts of Horace, Chaucer and Shakespeare were transformed onto actual things, vellum, parchment or paper, that they survived. Nowadays we tend to rely on transcribing the electrical impulses in our brains into electrically powered machinery which is in turn reliant on raw materials from all over the globe.

What if something happened to those able to build, maintain and develop the computers we call 'icloud' and 'google'? Roman society broke down, no one knew how to use their central heating systems or maintain the water supplies. What if that happened again? Handwriting on paper suddenly seems rather important; otherwise the only legible things we will leave behind for future generations will be shopping lists or notes of condolence...

Handwriting! Use it or lose it!

Anon

Nature Count & Give a Hog a Home

Saturday 14 June 2pm
All Saints' Churchyard
Charlton All Saints

Citizen Science - Wildlife Survey for *Churches Count on Nature*

- **Give a Hog a Home**
Help us create a Hedgehog friendly space
- Hedgehog Story Time
for under 10s
- Mini Beast Hunt
- Coffee & Cake Stall
- Give & Take Stall
- Learn about Eco Church
- Join in or just sit & chat
- Inside Church if wet



You, You and Yews

Our Spotlight article this month highlights the Radnor Arms and its landlady, so in fairness - in all senses - we want to mention the Yew Tree pub in Odstock as well. It's very much a fair place; old, listed & beautiful, and a lovely welcoming hostelry for some happy hours eating and drinking. Converted from 2 cottages in the 18th century to an Inn, the first landlord was listed in 1875 as George Ford, ancestor of the very same family still in the area. The pub's probably named after both the enormous old Yew tree up the lane, and the Great Yews and Little Yews woodlands further up the droveways.

Did you know yew trees (*Taxus baccata*) are probably the longest living trees in the UK and aren't even considered particularly old until they are over 800? It's believed there are a few in the UK that are 2-3000 years old, though 'daughter' trees can grow up alongside the original tree.

They can grow incredibly slowly, sometimes just an inch extra girth in 90 years! In fact, it is quite possible that areas like Great Yews (which has been designated a SSSI) could be the most similar existing landscape to that of the early Neolithic, referred to in our last edition, before woodland was cleared for farming.

Many churchyards in England include yew trees even older than the church and there's plenty of mythology surrounding them about longevity and death. Yew foliage is highly poisonous to livestock, so the trees were a big deterrent to peasants allowing their animals to graze there. And more recently yew-derived chemicals called taxols have been used in chemotherapy as they have been found to be effective anti-cancer drugs. Yew wood is very strong and durable & was used for making longbows and arrows; one of the world's oldest surviving wooden artefacts is a wooden spearhead made from yew which is 450,000 years old (fighting even then....).

You can join the dedicated organisation for ancient yew tree enthusiasts if you like www.greatest-yew.org They have surveyed yew trees all over England, including the Great Yews Wood (credit to Peter Andrews). He found that 'Nunton Ewetrees' was noted in 1685 as having the "greatest plenty" of yew trees in the West of England. Yew trees of the Ebbles valley (thanks Peter Norton) have also been identified & surveyed - including the one in Whitsbury Road naming our pub.

To keep your own girth growth down, you can do a lovely 10-mile walk (W38 leaflet on Cranbornechase.org) which passes along the drove way next to Great Yews, and peer inside. It's private land but the leaflet shows that access can be granted in advance from the landowner.

Why not take in both the Radnor Arms at the beginning and the Yew Tree towards the end - what could be better?!

Spot Light

Louise Penny - Radnor Arms Landlady

One thing everyone living in Nunton can agree on is that we are lucky to have a very fine village pub, the Radnor Arms. We interviewed the landlady, Louise Penny. The first thing I asked Louise was how she learned her craft and then ended up running the Radnor. "I'm a Nunton girl", she explained. "I was born here and grew up in Nunton, living at the pub when I was little and then in the bungalow in Nunton Drove for many years. I worked my first shift as a waitress here when I was 11! Then when I was a teenager Dad bought the pub in Steeple Langford so we moved out there."

Was running a pub a lifetime ambition?

No! Not at all! After school I started midwifery training in Lewisham. But I soon knew that wasn't for me so I left and became a nanny which I absolutely loved. I was living in London and was lucky to have a wonderful job. But then things became difficult for my parents at home when Mum fell ill. By then we'd had enough of London so I went to help Dad in the Rainbow on the Lake. I ended up running the pub there for five years, which is really where I learnt the ropes. But having been born into it I think it's something that's just in you. You know by instinct what it's all about. It's not an easy life and we worked incredibly hard to build up a good business there. But then after five years it was wonderful to get back to nannying, and I vowed that I'd never run another pub again!

What changed your mind?

Dad phoned one day to say he needed to talk- the manager of the Radnor, Jason, was looking for someone to take over the running of the pub. And straight away I knew that was the job for me, I couldn't resist- it's a very special, unique place, the Radnor. The people, the village, the surrounding area, the link with our family and my childhood. And everyone here loved Mum and Dad. Maybe it's just something in the bricks! It has always had a special place in my heart.

What do you enjoy most about running the Radnor?

The variety. No two days are ever the same. And we have a great balance here. We've got local drinkers, foodies from far and wide, families, groups of friends, lots of hospital people, country folk, people from the town, you get all sorts. But mostly, on a Friday night for example, it's about community, being able to come in for a drink and meet up with people – it's something people cherish. Not forgetting men who are visiting the milk machine! And then sometimes there are folk who come on their own looking for some quiet company just to ponder and have a drink, or because of a sadness they're in need of a listening ear. Often I'll sit with someone for a while, share some time with them, listen to their story. Really, it's all about the people. Simple as that.

We frequently hear that the pub trade is under the kosh and pubs are closing at a frightening rate. How are you managing as a business?

It's not easy! But we do have an excellent team who are doing a fantastic job. It's the team that makes the difference. We have had some recent changes and that is always hard because people get used to the faces they see. And costs have rocketed – as everybody knows. But we also have great loyal customers, and we keep busy. Friday

(Continued from page 9)

nights here are always good. But you're right, more than 34 pubs closed each and every month in 2024, in England and Wales. And already this year there have been hundreds more.

Tell me about one of your great successes, Radfest, which I think started on the first anniversary of your taking on the lease?

That's right! I'll never forget that first one which went so well. All 450 tickets sold out and we had a simply amazing night. It's now an annual event, but we do need sun! If only I could guarantee the weather because it's not so easy in the wet. But there's such a buzz and it's always been a sell out so we must be doing something right!

Running a pub has always struck me as a very hard life. Do you ever get a break?

It's hard taking time off, but we make sure that we get away a couple of times a year. And nowadays we close every evening at 10.00 pm which is a lifesaver. We enjoy evenings out at the Yew Tree sometimes or the Fox and Goose at Boombe Cisset. People are surprised to see us there but of course we go there, we have a great relationship with Gordon and our fellow publicans and always help each other whenever we can. Sometimes a day off in the week is possible, although you tend to get drawn in to sort things out. And of course George is my rock, I couldn't do it without him!

Thank you to Louise for agreeing to be in our Spotlight this month.

Odstock, Nunton and Bodenham W.I.

Our May meeting was a very busy affair including the AGM for this year. The meeting was opened and a reminder for the Summer Party was given. The Summer outing was discussed with the opportunity of a stop at the beautiful village of Lacock for lunch, then on to Cadenham Manor Gardens.

The AGM was then held and many thanks were given to all the members' hard work over the past year.

After the coffee break our speaker was introduced, Maureen Frost whose subject today was Breadmaking. She started off her love of breadmaking with the help of her uncle Bill in Kent who was the local baker. Then went on to quote from a book by Jo Draper Dorset Food which referred to the large houses and estates in the area which explained the importance of bread to everyone. The average family spent at least half their income on ingredients of bread during the 19th century. The next topic was the ingredients required: yeast, various flours, liquids, fats. Not forgetting salt. Nuts and seeds that can be used as a topping. Enriched dough has eggs and sugar, maybe dried fruits. Superstitions around bread was that the loaf made on Good Friday never moulds, grated bread medicinal for both people and cattle, an X was drawn in the flour overnight to stop it being bewitched !!

A heartfelt thanks was given by our members at the end of her entertaining talk.

Our table top sale then commenced today's items were jewellery which raised £60.00.

The next meeting is 9th June. This meeting involves a fashion show of good quality second hand clothing and the summer party starting at 2 pm.



Charlton All Saints

Village Barbecue
Saturday 19 July
Charlton Churchyard

Save the Date!

Watch this space and Charlton FB
group for more details...



News from the Pews

Odstock and Nunton

After all the busy period surrounding Easter, May has been more gentle. The Benefice said a sad but joyous farewell to the Reverend Jenny Taylor, with a communion service in the beautiful Bishopstone church. It was packed out and the singing was amazing. This was followed by a bring and shared lunch in the village hall. Thanks to everyone involved, organist and providers of food.

We held our annual PCC meeting on 7 May, which was well attended by parishioners, this was followed by a lovely party for all the people who work so hard to support our churchwardens in keeping the churchyards tidy, flowers, brass, music and many other area. Thank you all. Services happened as published, the Monday study group, which starts in Lent, continued, and, of course, Creativity, on the third Thursday of the month in the Barker Room.

Take care all and be kind to each other.

*Mary Boydcamps & Stephanie Elcock (our roving reporter on the high seas).
Churchwardens*

Charlton All Saints

Power to the Flowers! We've joined *No Mow May* in the Churchyard, to do what we can to encourage our flowers and insects. We are delighted to collaborate with Katie Cameron from Plantlife on this.

On 15 May, we celebrated two years of our peer led informal exercise group *Church Gym*, started by Caroline Winternitz, which has brought fitness and companionship to lots of ladies in Charlton, along with some very welcome donations for the Church – thank you to all.

At the end of May, we had Plant Swap in the Church ably organised by Chris Clark, and our Annual Parish Meetings for electing Church Officers and hearing reports on the activities of the Clergy and PCC throughout last year.

In June, we will have the first of our Summer Evensongs, at 5.30 pm on Sunday 8 June. It's been a while since we've had Evensong at our Church and I'm really looking forward to it.

As part of our continuing *EcoChurch* programme, we will be joining *Churches Count on Nature* for the second year. For anyone not familiar with this, it is citizen science (like the *Big Garden Bird Watch*) in which we note all the wildlife and plants we can find in our Churchyard and send this information off to the national organisers. This will be on Saturday 14 June from 2pm in the Churchyard. Refreshments and fun available – suitable for all ages.

And finally, please save the date for our **Annual Village BBQ on Saturday 19 July**.
Clare Penny, Churchwarden

St. Andrew's Church, Nunton presents

A concert of Music for a Summer Evening



featuring

The Kate Edgar Singers plus special guest instrumentalists

In aid of Rise 61 & church upkeep expenses

Friday 20 June 2025 at 7pm

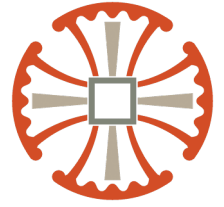
Tickets £12 each to include refreshments – under 18's free

*Tickets available in advance from:
Debby Underhill 07865724607 & Caroline Cooper
or on the door*



Church Services

For Britford, Charlton All Saints,
Odstock and Nunton with Bodenham



June 2025

Please check the weekly e-Bulletin or e-N&N for all Benefice Services

1 June Sunday after Ascension	9.30am	Parish Communion	Britford	Ruth H-S
	11.00am	Family Service	Odstock	Adrian Taylor
8 June PENTECOST	9.30am	Family Communion	Nunton	Maggie Metcalfe
	5.30pm	Evening Prayer	Charlton All Saints	Ruth H-S
15 June TRINITY SUNDAY	9.30am	Parish Communion	Odstock	Ruth H-S
22 June 1st Sunday after Trinity	9.30am	Parish Communion	Charlton All Saints	Alison Waterhouse
	11.00am	Family Service	Nunton	Adrian Taylor
29 June Saints Peter & Paul	11.00am	Benefice Communion	Coombe Bissett	Alison Waterhouse
6 July 3rd Sunday after Trinity	9.30am	Parish Communion	Britford	Maggie Metcalfe
	11.00am	Riverside Service	Jubilee Gardens, Odstock	Maggie Metcalfe
	6.00pm	Songs and Sausages	Britford	Maggie Metcalfe

Clergy Team

Team Rector ~ The Revd Dr Ruth Howlett-Shipley:	01722 697 022
Team Vicar ~ The Revd Alison Waterhouse:	07904 034 221
Associate Priest ~ The Revd Kate Woolven:	07754 582 395
Associate Priest ~ The Revd Maggie Metcalfe:	01722 325 925
Team Administrator ~ Mrs Emily Broomhead:	07890 262 376



Services in Chalke Valley Benefice – June 2025

BCP = Book of Common Prayer (Traditional Language), CW = Common Worship (Contemporary Language)



1 June Sunday after Ascension	9.30am	Family Communion (CW)	Broad Chalke	Alison Waterhouse
	9.30am	Parish Communion (CW)	Britford	Ruth H-S
	11.00am	Holy Communion (BCP)	Berwick St John	Alison Waterhouse
	11.00am	Morning Prayer (BCP)	Ebbesbourne Wake	Biddy Trahair
	11.00am	Parish Communion (CW)	Coombe Bissett	Ruth H-S
	11.00am	Family Service	Odstock	Adrian Taylor
	11.00am	Morning Service	Bishopstone	Sally Leaver
8 June PENTECOST	9.30am	Parish Communion (CW)	Bowerchalke	Kate Woolven
	9.30am	Family Communion (CW)	Nunton	Maggie Metcalfe
	10.30am	Worship Together	Broad Chalke Hub	Lay Led
	11.00am	Parish Communion (CW)	Homington	Alison Waterhouse
	11.00am	All Age Service	Alvediston	Biddy Trahair
	3.00pm	Evening Prayer	Fifield Bavant	Biddy Trahair
	5.30pm	Evening Prayer	Charlton All Saints	Ruth H-S
15 June TRINITY SUNDAY	9.30am	Holy Communion (BCP)	Bowerchalke	Alison Waterhouse
	9.30am	Parish Communion (CW)	Bishopstone	Maggie Metcalfe
	9.30am	Parish Communion (CW)	Odstock	Ruth H-S
	11.00am	Family Communion (CW)	Ebbesbourne Wake	Kate Woolven
	11.00am	Parish Communion (CW)	Coombe Bissett	Maggie Metcalfe
	11.00am	Parish Communion (CW)	Berwick St John	Alison Waterhouse
22 June 1st Sunday after Trinity	9.30am	Parish Communion (CW)	Charlton All Saints	Alison Waterhouse
	9.30am	Parish Communion (CW)	Broad Chalke	Ruth H-S
	11.00am	Family Service	Nunton	Adrian Taylor
	11.00am	Parish Communion (CW)	Bishopstone	Alison Waterhouse
	11.00am	Holy Communion (BCP)	Alvediston	Ruth H-S
	6.00pm	Evening Prayer (BCP)	Homington	Rhoddy Voremberg
	6.00pm	Songs of Praise	Berwick St John	Alison Waterhouse
29 June SS Peter & Paul	9.30am	Benefice Communion (CW)	Ebbesbourne Wake	Alison Waterhouse
	11.00am	Benefice Communion (CW)	Coombe Bissett	Alison Waterhouse
	3.00pm	Evensong (BCP)	Stratford Tony	Ruth H-S
6 July 3rd Sunday after Trinity	9.30am	Family Communion (CW)	Broad Chalke	Kate Woolven
	9.30am	Parish Communion (CW)	Britford	Maggie Metcalfe
	9.30am	Holy Communion (BCP)	Berwick St John	Alison Waterhouse
	11.00am	Morning Prayer (BCP)	Ebbesbourne Wake	Biddy Trahair
	11.00am	Parish Communion (CW)	Coombe Bissett	Ruth H-S
	11.00am	Riverside Service	Odstock	Maggie Metcalfe
	6.00pm	Songs and Sausages	Britford	Maggie Metcalfe

Ministry Team:

Team Rector ~ The Revd Dr Ruth Howlett-Shipley: 01722 697022

Team Vicar ~ The Revd Alison Waterhouse: 07904 034221

Associate Priests ~ The Revd Maggie Metcalfe: 01722 325825, The Revd Kate Woolven: 07754 582395

Team Administrator ~ Mrs Emily Broomhead: 07890 262376

Assisting Clergy:

The Revd Canon Anthony Hawley: 01794 390607, The Revd Canon Tony Monds: 07808 614597

Lay Worship Leaders:

Angela Bridges: 01747 828383, Yvonne & Kevin Follett: 01747 828785, Caroline Lamb: 01722 780789,
Sally Leaver: 01722 780447, Don Morgan: 01722 718557, Adrian Taylor: 01722 325862, Janet Roe: 01725 519242,
Biddy Trahair: 01722 780666, Rhoddy Voremberg: 07785 304142, James Wardroper: 01722 718152

Stars Appeal Walk for Wards



Celebrating our

20TH Walk for Wards

Wilton House | Sunday 6th July 2025

Walk 3k, 5k, 10k & NEW for 2025 15k



SCAN ME

Register **FREE** at starsappeal.org

Or scan the QR code
Entry closes 29th June



Salisbury Hospital's Charity

Registered Charity: 1052284



Join over 1,000 people at Stars Appeal's 20th Walk for Wards

The Stars Appeal, Salisbury Hospital's Charity, are celebrating that over 1,000 people have already signed up for their 20th Walk for Wards at Wilton House this July, and are inviting even more walkers to join them.

Walk for Wards takes place on Sunday, July 6th and participants can walk 3k, 5k, 10k or the new 15k route to say thank you to a ward or department at Salisbury Hospital that has cared for them or their family, or to celebrate the memory of a loved one.

It is free to enter the sponsored walk and lunch is also provided. Everyone is welcome to stay and enjoy the Wilton House grounds and live music afterwards.

Stars Appeal Ambassador and Consultant Surgeon Graham Branagan said: "We are absolutely thrilled that we already have 1,000 people signed up. However, we need more to hit our 2,000 walker target to ensure we can raise as much money for the hospital as possible. So, I'd encourage everyone reading this to sign up today and join us for what is a fantastic celebration at Wilton House on the 6th of July."

Money raised by the event helps fund Stars Appeal projects across the hospital including state-of-the-art equipment, enhancements to buildings, and the charity's ongoing projects like the Stars Appeal Wi-Fi and support for people with cancer.

Walk for Wards is held by kind permission of Stars Appeal President Lord Pembroke and Lady Pembroke, sponsored by Salisbury Reds, with support from Wilton and Salisbury Rotary Clubs who marshal the event, and many other local people and organisations.

**Register for free at www.starsappeal.org
or
call the Stars Appeal office on 01722 429 005**



home instead.



COMMUNITY DEMENTIA TALKS

UPCOMING EVENTS

📍 12/06/25 - Romsey Town Hall

📍 24/06/25 - Quaker Meeting House Salisbury

🕒 Both events start at 6pm and last 1.5-2 hours

WHAT ARE THEY?

Dementia sessions designed to help those living with or supporting a person with dementia.

- Better understanding of the condition
- Tips and tricks for managing the behaviours
- How to look after yourself as the main carer

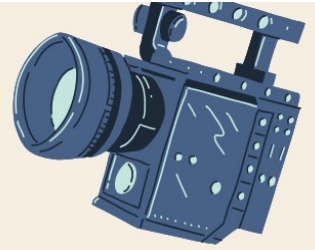
For more info contact us on 01722 443 559.



EVERYMAN
CINEMA SALISBURY

&

**home
instead.**



Present

AFTERNOON MATINEES

FOR OVER 60S



SUMMER HOLIDAY
Tuesday 1st July
Run time - 107 Mins



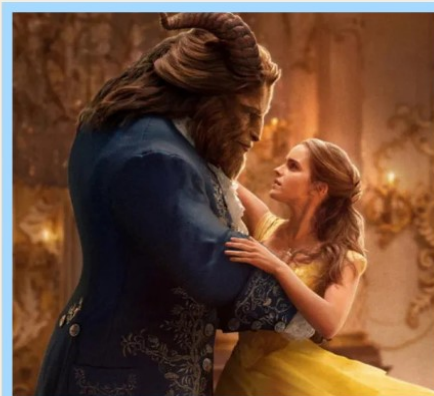
OVERBOARD
Tuesday 5th August
Run time - 112 Mins



NOTTING HILL
Tuesday 9th September
Run time - 124 Mins



JURASSIC PARK
Tuesday 7th October
Run time - 127 Mins



BEAUTY & THE BEAST
Tuesday 4th November
Run time - 129 Mins



WHITE CHRISTMAS
Tuesday 2nd December
Run time - 120 Mins

FILMS START AT 1 PM AND ARRIVALS ARE WELCOME FROM 12:30 PM

THIS IS A FREE DEMENTIA FRIENDLY EVENT. HOWEVER, DONATIONS TO SILVER SALISBURY ARE WELCOME. THERE IS NO NEED TO PRE-BOOK.

THE CINEMA LIGHTS ARE LEFT LOW SO THAT PEOPLE CAN MOVE AROUND IF NECESSARY AND THE CINEMAS SURROUNDINGS ARE PARTICULARLY SUITABLE FOR OLDER PEOPLE.

WE ALSO OFFER A COMPLIMENTARY TEA OR COFFEE TO ALL GUESTS, ALL ARE WELCOME BUT PREFERENCE WILL BE GIVEN TO PEOPLE LIVING WITH DEMENTIA AND THEIR FAMILIES OR CARERS



01722 515767



EVERYMAN, 17 ENDLESS ST, SALISBURY SP1 1DP

Police Crime Commissioner

June 2025 Update

In the last few weeks, there has been some encouraging news following the publication of the latest crime figures by the Office of National Statistics.

It shows that in the period ending in December 2024, recorded crime in Wiltshire and Swindon fell by 5.6% compared to the previous year (from 41,903 to 39,627) and that Wiltshire has the lowest number of reported crimes in the country per 1,000 of population.

As a headline figure, these are good results and reflect the improvements being made by Chief Constable Roper, her senior leadership team, and the frontline officers who continue to strive to provide you with the best possible service with the resources they have available to them.

That said, I have always maintained that statistics only give you part of the overall picture, and whilst the figures tell us Wiltshire is a safe county to live in, there is a marked difference between being safe and feeling safe.

Two of the key issues members of the public speak to me about concern police visibility where they live, and the ability to contact Wiltshire Police directly either by calling 101 or 999 or contacting them online.

I support the Chief Constable's commitment to enhancing the visibility of our Neighbourhood Policing Teams by using the two new Mobile Police Stations funded by my office. From their introduction last June until the end of March 2025, they have been out in communities across Wiltshire and Swindon 226 times.

I have challenged Wiltshire Police to create a more consistent schedule, so you are fully aware of when you can speak to your local police officers about the issues affecting you.

We have made significant improvements when you're calling either 999 or 101.

90% of all 999 calls are now answered in under ten seconds and I want to make further investment in the Crime and Communications Centre to improve response times and provide a more effective and timely investigative service with enhanced victim support.

Wiltshire Police is continuing to work hard to build trust and confidence with you, but we know we see under-reporting of several different crime types for a variety of reasons.

I need you to report crime when and where you see it, so I can be confident that when crime statistics are published, it gives an accurate reflection of how you feel in your community and shows that as well as Wiltshire being a safer place to live and work, you are feeling safer.

Philip Wilkinson

Police and Crime Commissioner

TWO RACES,
ONE AMAZING
IMPACT

COLOUR DASH

1

Join the race TO END HOMELESSNESS

Fun. Loud. Family-friendly.

One mad lap of the race circuit filled with colour, music and foam.

PRICES FROM
CHILD £5
ADULT £22
All ages welcome

BOOK NOW



EARLY BIRD
TICKETS
AVAILABLE

RUN THE

10K SPEEDWAY

2

Alternatively, lace-up your running shoes and get ready to achieve your P.B. on the fastest motor racing circuit in the UK, the perfect running ground for beginners and experienced runners alike!

Prices start from £20. Minimum age 15+.

As a charity, Alabaré has been helping people who are homeless for over 30 years by providing a warm, safe home, and support to rebuild their lives. By taking part, you could support a vulnerable person take the first steps towards building a new life.

13 SEPTEMBER 2025

THRUXTON RACE CIRCUIT

#LETSENDHOMELESSNESS

Alabaré

Registered with



FUNDRAISING
REGULATOR

Alabaré is a company limited by guarantee, registered in England No.2604011 Registered Charity No.1006504.
Riverside House, 2 Watt Road, Salisbury, Wiltshire SP2 7UD

HILLSIDE Self Catering
accommodation
in Odstock Village

Luxury log cabin sleeps up to five

**Plus Twin, Double and Single
self-contained rooms**

All rooms and the log cabin opening
out on to delightful gardens and
each has a small kitchen with a
fridge, oven and microwave.

Free parking

Minimum of a two night stay

**Please phone Carol or Jeff
for bookings**

On 01722 329746 or book online at

Hillsidebandb.co.uk

The Yew Tree inn is nearby for great
evening meals



Are you looking for a friendly,
reliable and
local window cleaner?

Contact PK Window Cleaning
for a free,
no obligation quote!

07585 036058

PKwindowcleaning@outlook.com

www.PKwindowcleaning.com

JN Upholstery
Bodenham

Josh Nicols has an upholstery workshop
in the
Black Barn in Bodenham.

T: 07704 767 813

E: info@salisbury-upholstery.co.uk

W: salisbury-upholstery.co.uk

Please get in touch for more details

CREATIVITEA

**Come and
Relax and be
Enriched by
A
Time of
Inventive crafting and
Varied conversations
In the Barker Room,
Nunton.
Third Thursday of the
month.
Eat cake and drink tea.
All very welcome.**



Grass, Tree & Hedge cutting

Garden clearance

Contact Josh on 07554 881 816

Email: josh@lovelandscaping.co.uk

S J GILLINGHAM

Oil Heating Services

Installation - Maintenance - Service

Email : sjgillingham@btinternet.com

Tel 07831 378803



Oil fired boiler maintenance

OFTEC REG OIL ENGINEERS

Cam's Cab

Executive Private Hire,

Air/Sea Transfers

Long Distance and Local Area

Cameron Purdon

07967 724533

ecam62@gmail.com

Professional, Reliable & Courteous

You're in Safe Hands

LIAM BOWEN

Painter and Decorator

**Free Estimates Competi-
tive Rates**

Mobile 07712 284 618

City and Guilds Qualified

Kevin Knight Clock & Watch Repairs

Free estimates given
Over 30 years' experience

Tel 01722 331969 Mob 07900 928451

Email: kevindavidknight@gmail.com

Handy Man

Friendly & reliable service

All jobs considered including:

Hedge & Grass cutting & Plumbing
Rubbish & Garden clearance & Repairs
Gutters cleaned & repaired & Fencing
Flat pack assembly & Small removals
Fully Insured, No Call Out Fee, No job too
small

Call Andy on 0770 4578 293

Email: acnservices@outlook.com

MY LITTLE WORLD

Children's Soft Play Hire

Various colours and packages available

Based in Charlton All Saints

Please contact Eleanor

mylittleworldsoftplay@gmail.com



Friendly IT Services

- Problems with your computer?
- Need something set up on your computer, tablet or phone?
- Need help with your smart equipment such as TV's and speakers?
- Or just want to learn how to use them?

**Friendly and convenient home visits
by a female IT professional.**

Email: pippa@itangelsalisbury.com
Website: www.itangelsalisbury.com

07855 115041

Coombe Bissett Stores and Post Office

Homington Road

Coombe Bissett SP5 4LR

shop@coombebissettstores.co.uk

01722 718852

facebook.com/CoombeBissettStoresNew

Open Monday to Friday 7:00am to 6:00pm

Saturday 7:00am to 1:00pm

closed Sunday and Bank Holidays

When the shop is open, so is the Post Office

Yoga Classes



Tuesday: 6.30-8pm Vinyasa

Wednesday: 9.30-10.30am Gentle Yoga (best for those relatively new to yoga)

Thursday: 6.30-8pm Vinyasa

Friday: 9-10am Power Yoga

Gong Baths every Sunday: 7-8pm

Restorative Yoga and Gongs once a month on Sunday: 6.30-8.15pm

Breathwork once a month on Sunday: 2-4pm

Underfloor heating. Mats, blankets and props provided. Off street parking

For more information please email: studiobritfordyoga@gmail.com

www.studiobritford.com



HUNT FOREST GROUP

Find your local Hunt Forest Group branch at

Blashford
Salisbury Road, Blashford,
Ringwood, Hampshire,
BH24 3PE
Tel: 01425 472 572

Email us at info@huntforest.com
Visit us online at www.huntforest.com



Hunt Forest Group stock a variety of brands including

JOHN DEERE	YANMAR
ISUZU	Club Car
STIHL	indespension
Husqvarna	WEIBANG

Find us on social media at @huntforestgroup



Units 22 – 24, Batten Road Industrial Estate,
Downton, Salisbury,
Wiltshire, SP5 3HU

BREWERY FRESH

Variety of real ales
Available on site and via our website

5% OFF ALL
COLLECTION ORDERS

Quote 'NEWS & NOTES' Upon purchase

www.hopback.co.uk

Contact Us

Email: info@hopback.co.uk

Tel: 01725 510986



DOWNTON BREWERY

NEW FOREST

TAP BAR FRIDAY FROM 4PM

Brewery Shop Monday to Friday
9am - 4pm

SATURDAY OPENING COMING SOON!

Bottled & draught beer available for
collection or free local delivery.

Unit 11/18 | Batten Road | Downton | Salisbury | SP5 3HU
T: 01725 513313 E: sales@downtonbrewery.com



www.downtonbrewery.com



Britford Farm Shop



Coffee, Cakes & Lunches

Gateaux made to order

Luxury Belgian chocolates

OPEN:

Mon - Fri 10.30am - 2.30pm

Last orders for lunch at 2pm

Booking is advisable
but not essential

*Robert Lewis and the team look
forward to hosting you
01722 413 400*

www.britfordfarmshop.co.uk



WOOD-FALLS TREE CARE

PROFESSIONALS IN ARBORICULTURE

All aspects of tree and hedge work undertaken

15 years experience



07894 849 583

jamievwhite@gmail.com



ND ARB
Fully insured
NPTC qualified

City & Guilds
NPTC



**M 2
PLUMBING**

- 30+ YEARS EXPERIENCE
- FAMILY RUN BUSINESS
- FULLY INSURED
- HEATING & HOT WATER PROBLEMS
- BATHROOM & SHOWER REFURBS
- ALL MAINTENANCE & REPAIRS
- BLOCKED DRAINS
- TOILETS & TAPS
- LEAKS

**DAVID MILLER
LUKE MILLER**

M2PLUMBERS@OUTLOOK.COM
07818 046222

**DAVID
LONG GARDEN
DESIGN**

GARDENS OF DISTINCTION

Passion for creating beautiful outdoor spaces

- Landscape & Garden Design
- Landscape & Garden Consultation
- Project Management
- Construction Tendering
- Planting Plans
- Garden Makeovers
- Maintenance Schedules
- Horticultural Advice and Tuition

www.davidlonggardendesign.co.uk

07747 750842 01725 514622

studio@davidlonggardens.co.uk



Consultant member of
The Gardeners Guild



David Long Garden Design
[david_long_gardens](https://www.facebook.com/david_long_gardens)

Local Halls

Britford

Memorial & Community Hall

Ideal venue for children's parties, social gatherings, family occasions, meetings and presentations, workshops, classes, private functions and community events
Competitive rates — convenient location

Holds up to 60 people
For bookings or enquiries:
Britford@live.co.uk

The Radnor Hall

Your village hall at Bodenham
for private functions, meetings & community events

Capacity: 80 standing, 60 seated
Special hire rates for residents of Bodenham, Britford, Charlton All Saints, Nunton and Odstock and for regular users
For bookings and enquiries, please contact the Hall Manager on 01722 329 760

RadnorHallBookings@gmail.com

Want to advertise in the News & Notes?

Head to NewsandNotes.co.uk for more info or email editor@newsandnotes.co.uk

Don't forget that News and Notes is also available online at

NewsandNotes.co.uk

Current and archived editions,
Longer versions of articles appearing in News and Notes,
Articles, news and reviews which we haven't had room to publish in our printed version.

You are encouraged to join the E-News and Notes mailing list.

Go to: **NewsandNotes.co.uk** to sign up.

Once a month you'll receive an electronic version of this newsletter plus the extra articles straight to your email inbox.

News and Notes

For Bodenham, Britford, Charlton All Saints, Nunton and Odstock

Editors:

Liz and Nick Stanger

Consultant Editor:

Jeremy Metcalfe

Email:

editor@newsandnotes.co.uk

Web page:

NewsandNotes.co.uk

Next Deadline:

14 June 2025
For July and August edition

Paper copy printed at Speedyprint Salisbury